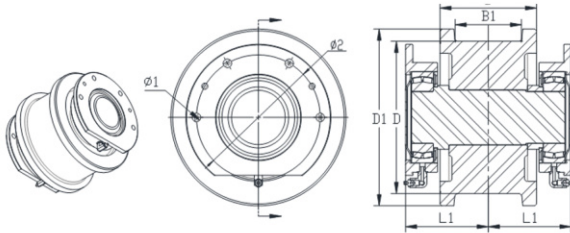


European Crane Wheel

The European-style crane wheel set is the main mechanical part of the running mechanism. The European crane wheel requires the diameter of the wheel to be as small as possible, and generally adopts the bearing seat structure of the frame on the web, and the bearing seat is connected with the frame with fasteners, and the wheel pressure is relatively large, and the material strength and assembly accuracy are required to be higher.



◆ Basic Parameter:

Wheel Diameter:
160-630 mm

Wheel Material:
65Mn

Wheel Width:
60-150 mm

